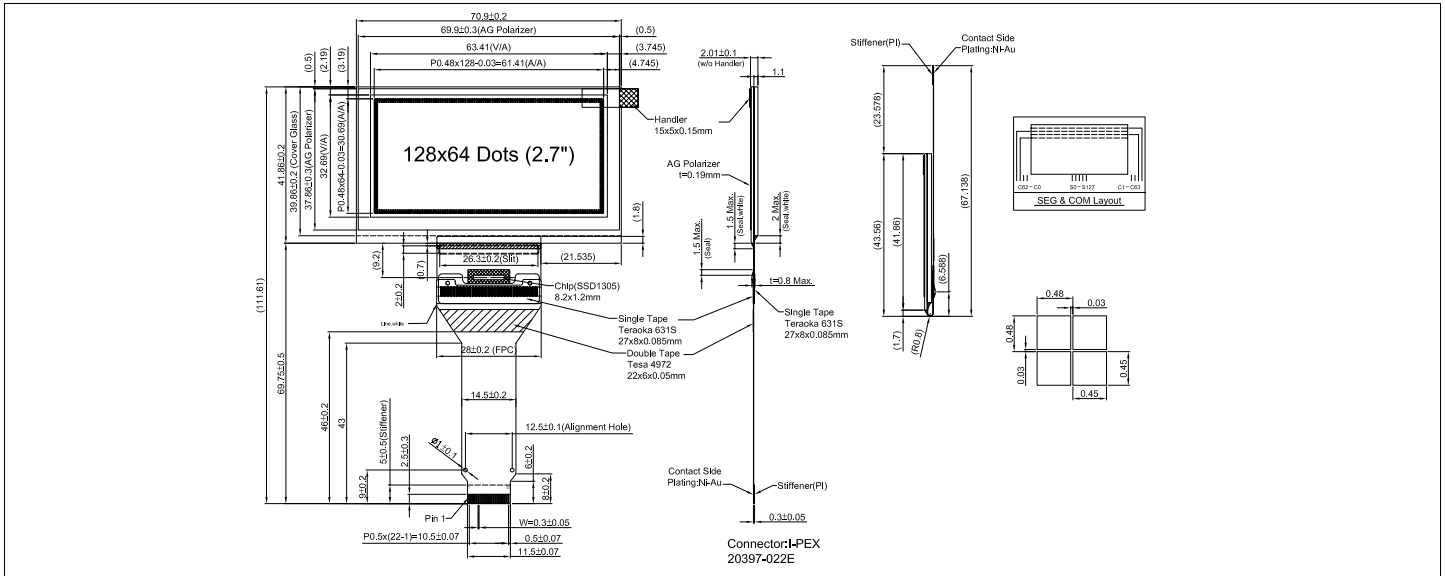


HDR12864-L

Dimensional Drawing

128 X 64 Dots Graphic, Yellow OLED Display



Features

- Viewing Angle.....Wide (160 degrees)
- High Contrast.....2000:1
- Fast Response Time.....10 usec
- Built-in DC-DC Converter
- Built-in Controller.....SSD1305

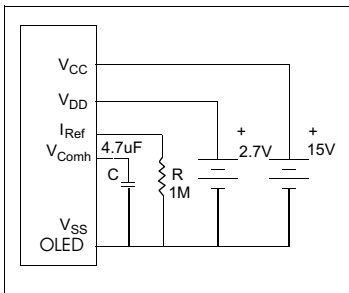
Physical Data

- Module Size.....70.9W x 111.61H x 2.01T mm
- Viewing Area Size.....63.41W x 32.69H mm
- Dot Pitch.....0.48W x 0.48H mm
- Dot Size.....0.45W x 0.45H mm
- Weight.....13 gm

Electrical Characteristics (VCC = 1.5 ± 5% 25°C)

PARAMETER	SYM	CONDITION	MIN	TYP	MAX	UNIT
OPERATING VOLTAGE	VDD	-	2.4	2.7	3.5	V
OPERATING VOLTAGE	VCC	-	14.5	15	15.5	V
INPUT HIGH VOLTAGE	V _{IH}	-	0.8*V _{DD}	-	V _{DD}	V
INPUT LOW VOLTAGE	V _{IL}	-	0	-	0.2*V _{DD}	V
OPERATING CURRENT	I _{DD}	All pixels on	-	100	300	µA
OPERATING CURRENT	I _{CC}	All pixels on	-	28	30	mA
POWER CONSUMPTION	P _D	All pixels on	-	420	450	mW
BRIGHTNESS	L	Average	80	100	-	cd/m ²
DRIVE METHOD	1/64 Duty					

Power Supply



Absolute Maximum Ratings

PARAMETER	SYMBOL	MIN	MAX	UNIT
SUPPLY VOLTAGE	VDD	-0.3	3.5	V
SUPPLY VOLTAGE	VCC	8	16	V
INPUT VOLTAGE	V _{IN}	-0.3	V _{DD} + 0.3	V
OPERATING TEMPERATURE	T _{OP}	-40	70	°C
STORAGE TEMPERATURE	T _{STG}	-40	85	°C
LIFE TIME (80/120 Cd/m ²)		60/40k	-	Hrs

Pin Connections

PIN NO.	SYMBOL	FUNCTION	
1	VCC	I	Power Supply for OLED driver
2	VCOMH	I	COM Deselected Voltage Level
3	IREF	I	Reference input (connect recom. Res. R)
4	D7	H/L	Bi-directional data bus
5	D6	H/L	Bi-directional data bus
6	D5	H/L	Bi-directional data bus
7	D4	H/L	Bi-directional data bus
8	D3	H/L	Bi-directional data bus
9	D2	H/L	Bi-directional data bus
10	D1	H/L	Bi-directional data bus
11	D0	H/L	Bi-directional data bus
12	E/RD#	L	Read data input
13	R/WR#	L	Write data input
14	D/C#	H/L	Data-command control input
15	RES#	L	Hardware reset input
16	CS#	L	Chip select input
17	Bs2	H/L	MCU interface selection input
18	Bs1	H/L	MCU interface selection input
19	VDD	I	Power Supply for internal logic
20	N/C	-	No Connection
21	VSS	I	Ground Pin
22	VSS	I	Ground Pin