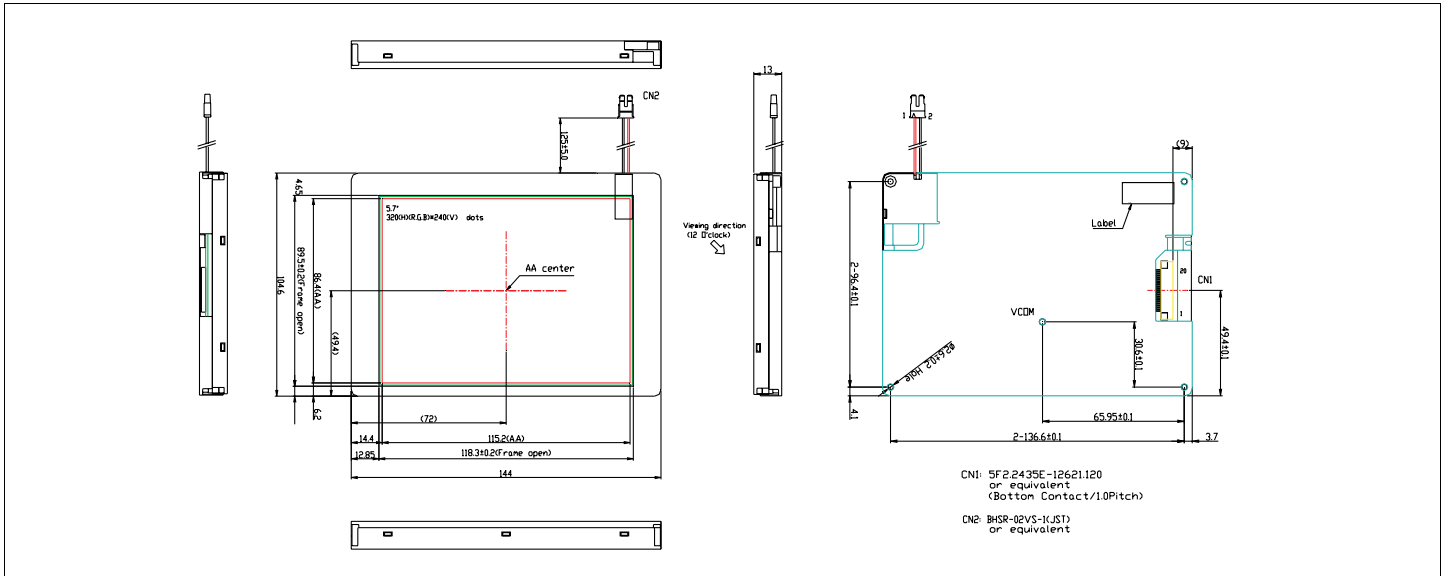


# HDA570C-G

Dimensional Drawing

5.7", QVGA, TFT (With Controller) , Transmissive Color, White LED Backlight



## Features

- Viewing Angle(H/V).....130/115 degrees
- High Contrast.....450:1
- Fast Response Time.....40 msec
- Built-in DC-DC Converter
- Built-in Controller.....SSD1963

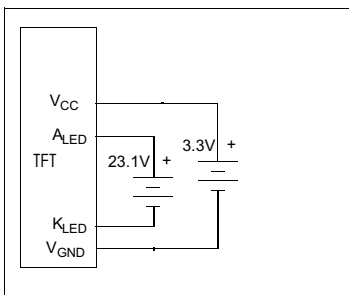
## Physical Data

- Module Size.....144.0W x104.6H x 13.0T mm
- Active Area Size.....115.2W x 86.4H mm
- Dot Pitch.....0.360W x 0.360H mm
- Weight.....152g

## Electrical Characteristics (VCC=3.3±0.125V 25°C)

PARAMETER	SYM	CONDITION	MIN	TYP	MAX	UNIT
OPERATING VOLTAGE	V <sub>CC</sub>	-	3.0	3.3	3.6	V
OPERATING VOLTAGE(WLED)	V <sub>WLED</sub>	-	-	23.1	24.5	V
INPUT HIGH VOLTAGE	V <sub>IH</sub>		0.8*V <sub>DD</sub>	-	V <sub>DD</sub>	V
INPUT LOW VOLTAGE	V <sub>IL</sub>		0	-	0.2*V <sub>DD</sub>	V
OPERATING CURRENT	I <sub>CC</sub>	V <sub>CC</sub> = 3.3V	-	TBD	-	mA
OPERATING CURRENT (WLED)	I <sub>LED</sub>	-	-	60	75	mA
POWER CONSUMPTION	P		-	TBD	-	W
BRIGHTNESS	L		400	450	-	cd/m <sup>2</sup>

## Power Supply



## Absolute Maximum Ratings

PARAMETER	SYMBOL	MIN	MAX	UNIT
SUPPLY VOLTAGE	V <sub>CC</sub>	0	5	V
BACKLIGHT CURRENT (LED )	I <sub>LED</sub>	-	TBA	mA
INPUT VOLTAGE	V <sub>IN</sub>	-0.5	V <sub>DD</sub> +0.5	V
OPERATING TEMPERATURE	T <sub>OP</sub>	-20	70	°C
STORAGE TEMPERATURE	T <sub>STG</sub>	-30	80	°C

## Pin Connections

PIN NO.	SYMBOL		FUNCTION
1	GND	-	Ground
2	VCC	-	Power Supply
3	NC	-	No Connection
4	D/C	L/H	Data/Command Select
5	WR	L	8080 mode Write Signal
6	RD	L	8080 mode Read Signal
7	D0	H/L	Data Bus
8	D1	H/L	Data Bus
9	D2	H/L	Data Bus
10	D3	H/L	Data Bus
11	D4	H/L	Data Bus
12	D5	H/L	Data Bus
13	D6	H/L	Data Bus
14	D7	H/L	Data Bus
15	CS	L	Chip Select
16	RES	L	Hardware Reset
17	NC	-	No Connection
18	R/L	H/L	Horizontal Display Mode Select
19	U/D	H/L	Vertical Display Mode Select
20	NC	-	No Connection