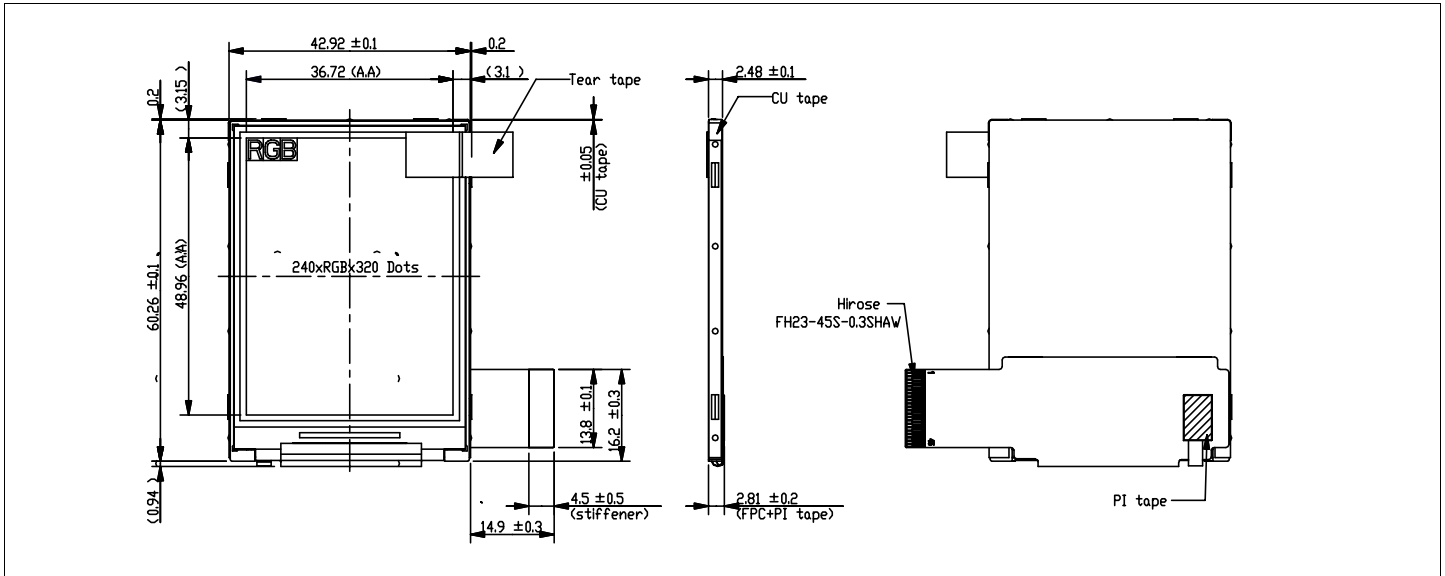


HDA240F

Dimensional Drawing

2.4" ,240 X 320 (TFT),Transflective, Color Graphics ,LED(White) Backlight



Features

- Viewing Angle(U/D/R/L).....70/70/70/70 degrees
- High Contrast.....450:1
- Fast Response Time25 ms
- Built-in DC-DC Converter
- Built-in Controller.....ILI9325C

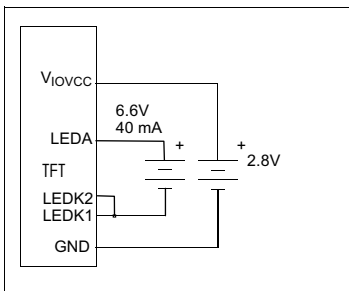
Physical Data

- Module Size.....60.26W x42.92H x2.48T mm
- Active Area Size.....36.72W x48.96 H mm
- Pitch Size.....0.153W x 0.153H mm
- Weight.....12.4g

Electrical Characteristics (VDD=1.8±0.090V 25°C)

PARAMETER	SYM	CONDITION	MIN	TYP	MAX	UNIT
OPERATING VOLTAGE	V_{IOVCC}	-	2.3/1.6	2.8/1.8	3.3/3.3	V
INPUT HIGH VOLTAGE	V_{IH}	-	$0.8V_{CC}$	-	V_{CC}	V
INPUT LOW VOLTAGE	V_{IL}	-	-0.3	-	0.2V	V
OPERATING CURRENT	I_{VCI}	-	-	7.2	-	mA
LED FORWARD VOLTAGE	V_F	at $I_f = 40$ mA	-	6.6	7.2	V
LED FORWARD CURRENT	I_F	at $V_f = 6.6$ V	-	40	-	mA
BRIGHTNESS	L	Average	-	250	-	cd/m ²

Power Supply



Pin Connections

PIN NO.	SYMBOL		FUNCTION
1	VCI	-	Power Supply for Logic and Booster
2	IOVCC	-	I/O Interface Supply Voltage
3-6	IM0-IM3	H/L	MCU Interface Select
5	RESET	L	Reset Input
6	VSYNC	L or H	Vertical Sync
7	HSYNC	L or H	Horizontal Sync
8	DOTCLK	H/L	Dot Clock for RGB Mode
9	ENABLE	L or H	Data Enable for RGB Mode
12-29	Db17-0	H/L	Bi-directional Data BUS (8,16,18 Bit wide)
30	SD0	H/L	SPI Interface Data Output
31	SDI	H/LI	SPI Interface Data Input
32	RD	L	Read Signal Input
33	WR/SCL	L or H/L	Write Strobe Input or Clock for SPI Mode
34	RS	H/L	Control-Index Select Input
35	CS	L	Chip Select Input
36	GND	I	Ground
37	LEDA	I	LED Anode
38	LEDK1	I	LED Cathode
39	LEDK2	I	LED Cathode
39	LEDK2	I	LED Cathode
40-45	NC	-	No Connection

Absolute Maximum Ratings

PARAMETER	SYMBOL	MIN	MAX	UNIT
SUPPLY VOLTAGE	V_{IOVCC}	-0.3	4.6	V
BACKLIGHT FORWARD CURRENT	I_{FI}	-	55	mA
INPUT VOLTAGE	V_{IN}	-0.3	V_{CC}	V
OPERATING TEMPERATURE	T_{OP}	-10	70	°C
STORAGE TEMPERATURE	T_{STG}	-30	80	°C

7. Dimensional Outlines

