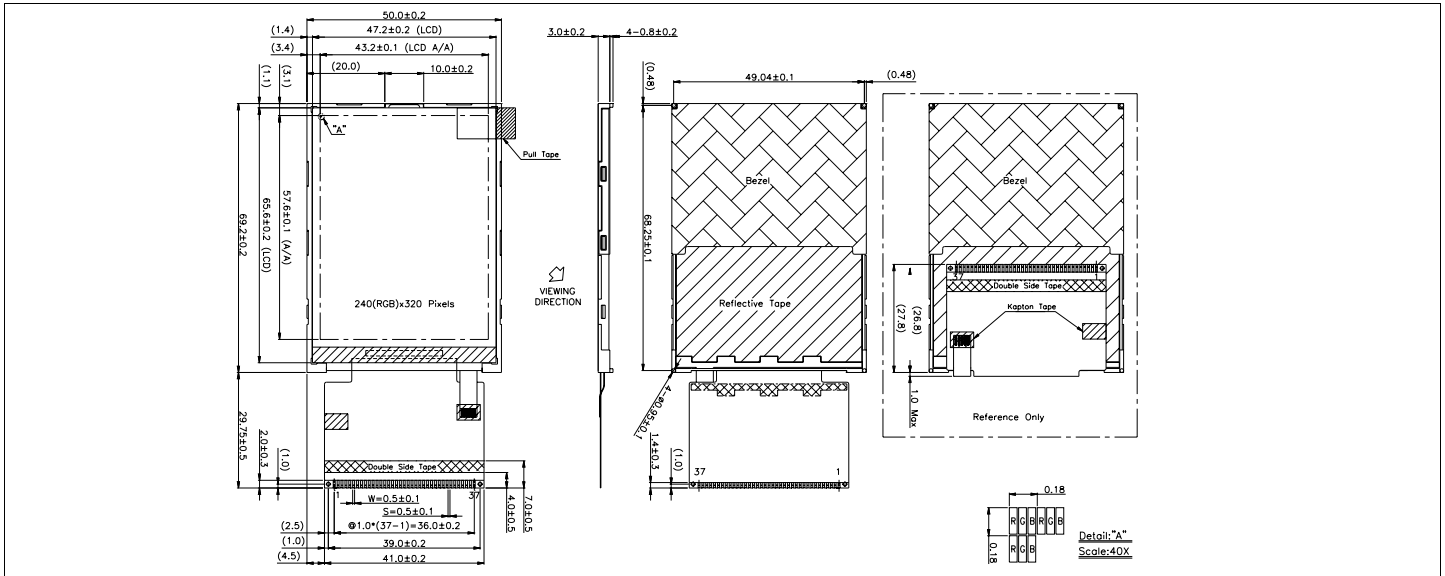


HDA280-2

Dimensional Drawing

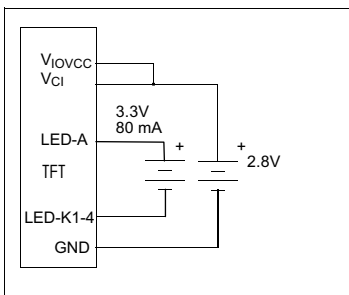
2.8" ,240 X 320 (TFT) Color Graphics ,LED(White) Backlight



- Features**
- Viewing Angle U/D/R/L.....60/45/60/60 degrees
 - High Contrast.....300:1
 - Fast Response Time25 mS
 - Built-in DC-DC Converter
 - Built-in Controller.....HX8347A
 - Touch Screen.....Analog- 4 Wires

- Physical Data**
- Module Size.....50.0W x 98.95H x 3.0T mm
 - Viewing Area Size.....47.2W x 65.6 H mm
 - Pitch Size.....0.18W x 0.18 H mm
 - Weight.....18 g

Power Supply



Absolute Maximum Ratings

PARAMETER	SYMBOL	MIN	MAX	UNIT
SUPPLY VOLTAGE (logic)	V _{IOVCC}	-0.3	4.6	V
SUPPLY VOLTAGE (analog)	V _{CI}	-0.3	4.6	V
INPUT VOLTAGE	V _{IN}	-0.3	V _{CC}	V
OPERATING TEMPERATURE	T _{OP}	-20	70	°C
STORAGE TEMPERATURE	T _{STG}	-30	80	°C

Electrical Characteristics (VIOVCC=2.8±0.115V 25°C)

PARAMETER	SYM	CONDITION	MIN	TYP	MAX	UNIT
OPERATING VOLTAGE	V _{CI} V _{IOVCC}	-	-	2.8	-	V
INPUT HIGH VOLTAGE	V _{IH}	-	0.8V _{CC}	-	V _{CC}	V
INPUT LOW VOLTAGE	V _{IL}	-	-0.3	-	0.2V	V
OPERATING CURRENT	I _{DD}	-	-	6.0	8.5	mA
LED FORWARD VOLTAGE	V _F	at I _f = 80 mA	-	3.3	-	V
LED FORWARD CURRENT	I _F	at V _f = 3.3V	-	80	-	mA
BRIGHTNESS	L	Average	280	350	-	cd/m ²

Pin Connections

PIN NO.	SYMBOL		FUNCTION
1	D0	H/L	Bi-directional Data BUS (8, 16 Bit wide)
2	D1	H/L	
3	D2	H/L	
4	D3	H/L	
5	GND	I	Ground
6	IOVCC	I	Power Supply Voltage (Interface)
7	nCS	L	Chip Select Input
8	DNC	H/L	Parameter/Command Control
9	nWR	L	Write Strobe Input
10	nRD	L	Read Strobe Input
11	Bs1	H/L	MPU Interface Select
12	X+	-	Touch Panel Left (NC)
13	Y+	-	Touch Panel Up (NC)
14	X-	-	Touch Panel Right (NC)
15	Y-	-	Touch Panel Down (NC)
16	LED-A	I	LED Anode
17	LED-K1	I	LED Cathode
18	LED-K2	I	LED Cathode
19	LED-K3	I	LED Cathode
20	LED-K4	I	LED Cathode
21	Bs2	H/L	MPU Interface Select
22	D4	H/L	Bi-directional Data BUS (8, 16 Bit wide)
23	D8	H/L	
24	D9	H/L	
25	D10	H/L	
26	D11	H/L	
27	D12	H/L	
28	D13	H/L	
29	D14	H/L	
30	D15	H/L	
31	nRESET	L	Reset Input
32	VCI	I	Power Supply Voltage (Analog)
33	IOVCC	I	Power Supply Voltage (Interface)
34	GND	I	Ground
35	D5	H/L	Bi-directional Data BUS (8, 16, Bit wide)
36	D6	H/L	
37	D7	H/L	

