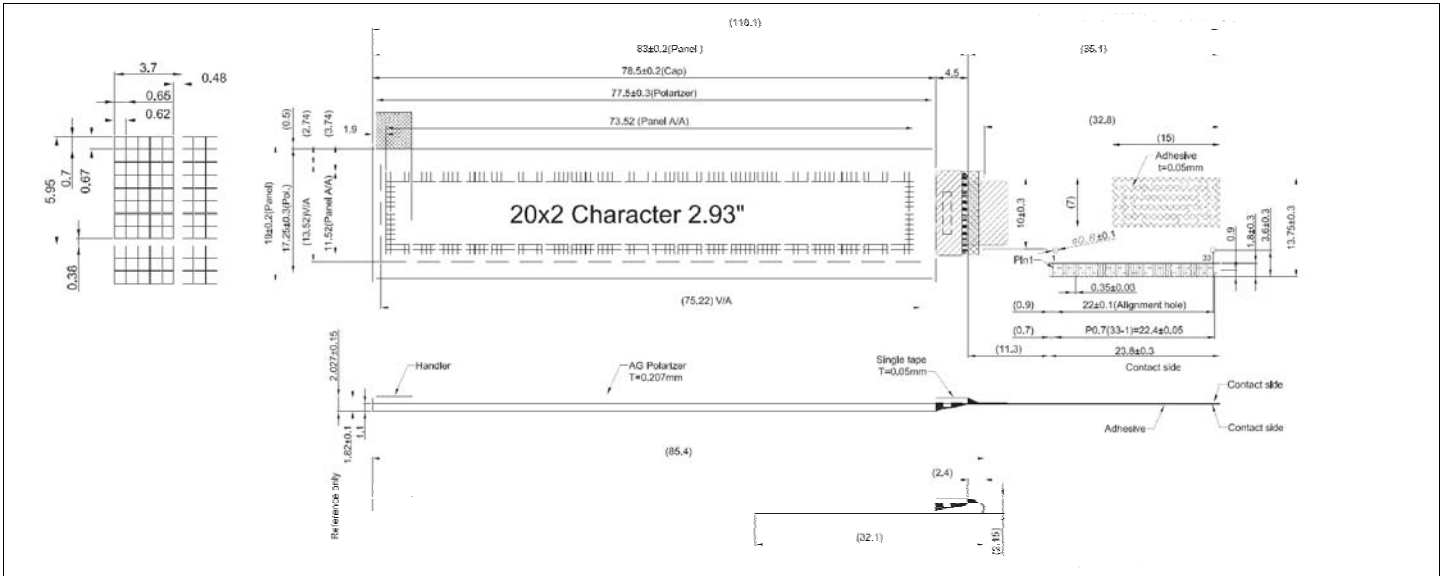


HDR202-1

Dimensional Drawing

20 Characters x 2 Lines, White OLED Display



Features

- Viewing Angle.....Wide (160 degrees)
- High Contrast.....2000:1
- Fast Response Time.....10 usec
- Built-in DC-DC Converter
- Built-in Controller.....SSD1311

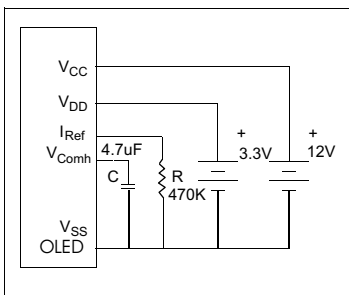
Physical Data

- Module Size.....118.1W x 19.0H x 2.027T mm
- Panel Size.....83.0W x 19.0H mm
- Active Area Size.....73.52W x 11.52H mm
- Weight.....6.77 gm

Electrical Characteristics (VCC = 12 ± 5% 25°C)

PARAMETER	SYM	CONDITION	MIN	TYP	MAX	UNIT
OPERATING VOLTAGE	VDD	-	2.4	3.3	3.6	V
OPERATING VOLTAGE	VCC	-	11.5	12	12.5	V
INPUT HIGH VOLTAGE	V _{IH}	-	0.8*V _{DD}	-	V _{DD}	V
INPUT LOW VOLTAGE	V _{IL}	-	0	-	0.2*V _{DD}	V
OPERATING CURRENT	I _{DD}	All pixels on	-	90	110	uA
OPERATING CURRENT	I _{CC}	All pixels on	-	TBD	-	mA
POWER CONSUMPTION	P _D	All pixels on	-	TBD	-	mW
BRIGHTNESS	L	Average	100	120	-	cd/m ²
DRIVE METHOD	1/20 Duty					

Power Supply



Pin Connections

PIN NO.	SYMBOL	FUNCTION
1	NC	No Connection
2	VSL	Segment Voltage Reference Input
3	VSS	Ground
4	REGVDD	Enable/Disable Internal VDD Regulator
5	SHLC	Scan Direction . Normal/Reverse
6	SHLS	Mapping Disp. Dat. Col. Add.-Seg. Drw.
7	VDD	Power Supply for Core Logic
8	VDDIO	Power Supply for Interface Logic
9-11	BS0-2	CPU Interface Selection
12	GPIO	GPIO Input/Output
13	CS#	Chip Select - active low
14	RES#	Hardware reset input
15	D/C#	Data-Command Control Input
16	R/WR#	Write Data Input
17	E/RD#	Read Data Input
18-25	D0-D7	Bi-directional Data Bus
26	IREF	Seg. Out. Current Ref. Input
27-28	ROM0-1	Character ROM Selection
29-30	OPR0-1	Character Generator Selection
31	VCOMH	COM Output (connect Reg. Capacitor)
32	VCC	Panel Power Supply
33	N/C	No Connection

Absolute Maximum Ratings

PARAMETER	SYMBOL	MIN	MAX	UNIT
SUPPLY VOLTAGE	VDD	-0.3	6	V
SUPPLY VOLTAGE	VCC	10	16	V
INPUT VOLTAGE	V _{IN}	-0.3	V _{DD} + 0.3	V
OPERATING TEMPERATURE	T _{OP}	-40	70	°C
STORAGE TEMPERATURE	T _{STG}	-40	85	°C
LIFE TIME (100/140 Cd/m ²)		54/38k	-	Hrs